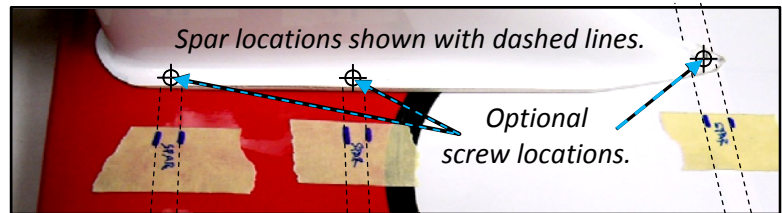
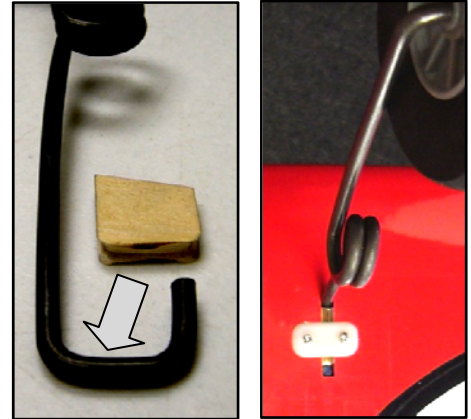
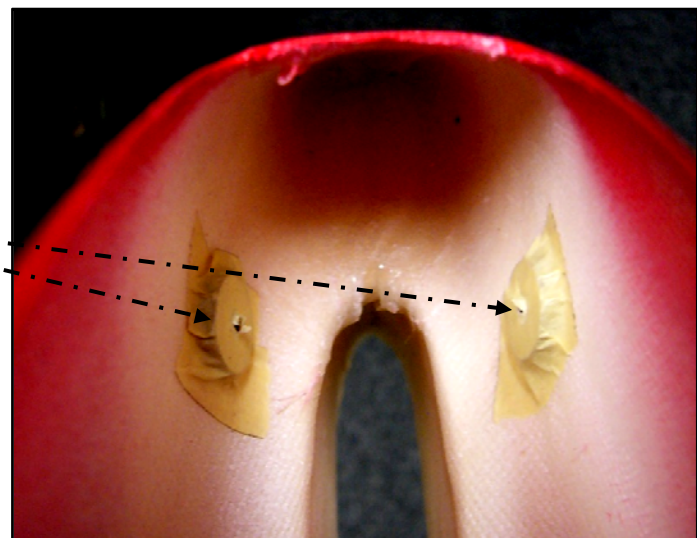


GEE BEE "E" ADDENDUM/ASSEMBLY NOTES

- PAGE 7 ITEM d:** Since the landing gear struts are thicker than shown in the instruction manual, it may be necessary to sand or carve the edges of the wooden inserts to fit the contour of these larger-sized struts. The main landing gear's retainer is made of plastic, not metal; use 5/16-inch long wood screws to attach these retainers to the bottom of the wing.
- PAGE 7 ITEM f:** If necessary, fine-tune the alignment of the wheels to the direction of travel and to the wheel pants by carefully bending or twisting the main landing gear struts.
- PAGE 7 ITEM g:** Mounting holes to attach the wheel pants to the wing are not predrilled. After deciding where you want to position the wheel pants, you may drill three 1/16-inch diameter guide holes into each wheel pant's mounting flange – directly over two of the three spars at the bottom of the wing (one at the rear and one on each side) and use three(3) 5/16-inch long wood screws to attach the wheel pants to the wing, or you may use epoxy and/or "goop" adhesive to secure the wheel pants to the wing.



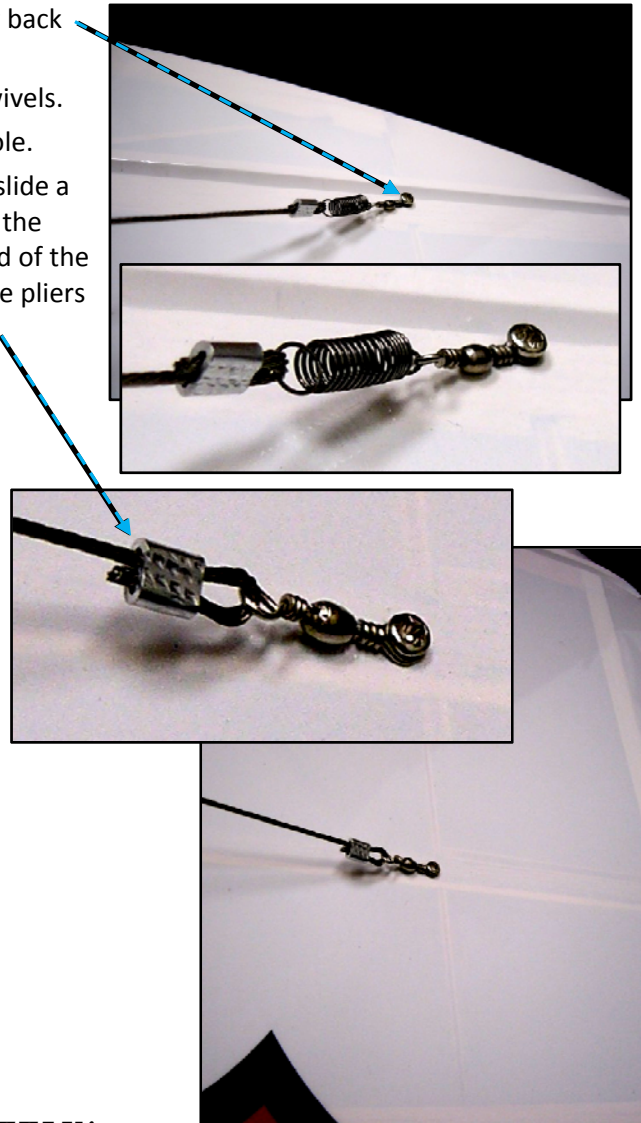
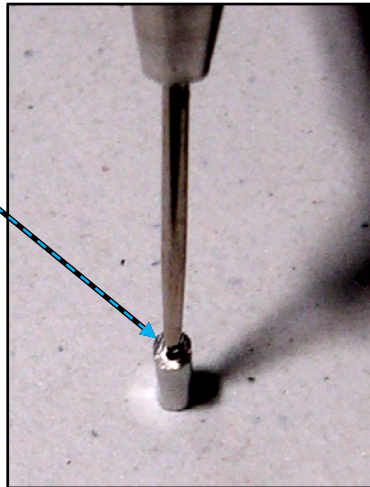
- PAGE 8 ITEM e:** As shown in the photo in the Instruction Manual at the bottom of page 8, slide a small wheel collar onto the tail wheel strut before you slide the metal mounting base onto the tail wheel strut.
- PAGE 8 ITEM f:** To fit the tail wheel's strut to the rudder: a) Make a 90-degree bend in the tail wheel strut at approx. 2-inches from the top end of the strut as shown at the right; and b) Test fit the bent end of the strut into the opening in the rudder and cut off the excess length of the bent end (*i.e.*, cut off approx. 7/8-inch, leaving approx. 1-inch of the bent end to insert and glue into the opening in the rudder).
- PAGE 10 ITEM a:** If you install the lower wing wires, it may help protect against the steel wires abrading the openings in the fiberglass wheel pants if you use epoxy to secure two pieces of scrap wood (such as any spacers left-over from **step 2** item **a** on page 4) inside the wheel pants, as shown below:



7. PAGE 10 OPTIONS #1 & #2:

- a) The locations of the 5/16-inch long wood screws shown on the right-side of the two diagrams in the Instruction Manual are at the 4th rib outboard of the wheel pants (not the 3rd rib).
- b) If you selected option #2, position the 1st screw at the very back edge of the wing's trailing edge.
- c) Crimp both ends of the springs onto the wing wires and swivels.
- d) Use thin CA adhesive to harden the wood at each screw hole.
- e) To attach the wing-wire cables to the springs and swivels, slide a crimp tube onto the end of the cable and guide the end of the cable through the end of the spring or swivel. Bring the end of the cable back into and all the way through the crimp tube. Use pliers to firmly squeeze the crimp tube to secure it to the cable.

(Note: If necessary, use the tip of a scribe or a small nail to slightly expand the openings in the crimp tubes.)



REMINDER:

***THIS PRODUCT IS NOT A TOY.
PLEASE ENJOY YOUR HOBBY AND FLY SAFELY!***

- The quality and capabilities of your finished model airplane depend on how you assemble it.
- Your safety depends on how you use and fly it.
- Any testing or flying of this model airplane is done entirely at your own risk.

If you have a question or problem while assembling your Maxford USA Gee Bee model "E" you may call us at (562) 529-3988 during our office hours, Monday through Friday, 9 AM to 5 PM Pacific time.

Happy Landings!

Maxford USA RC Model Mfg., Inc.
www.maxfordusa.com